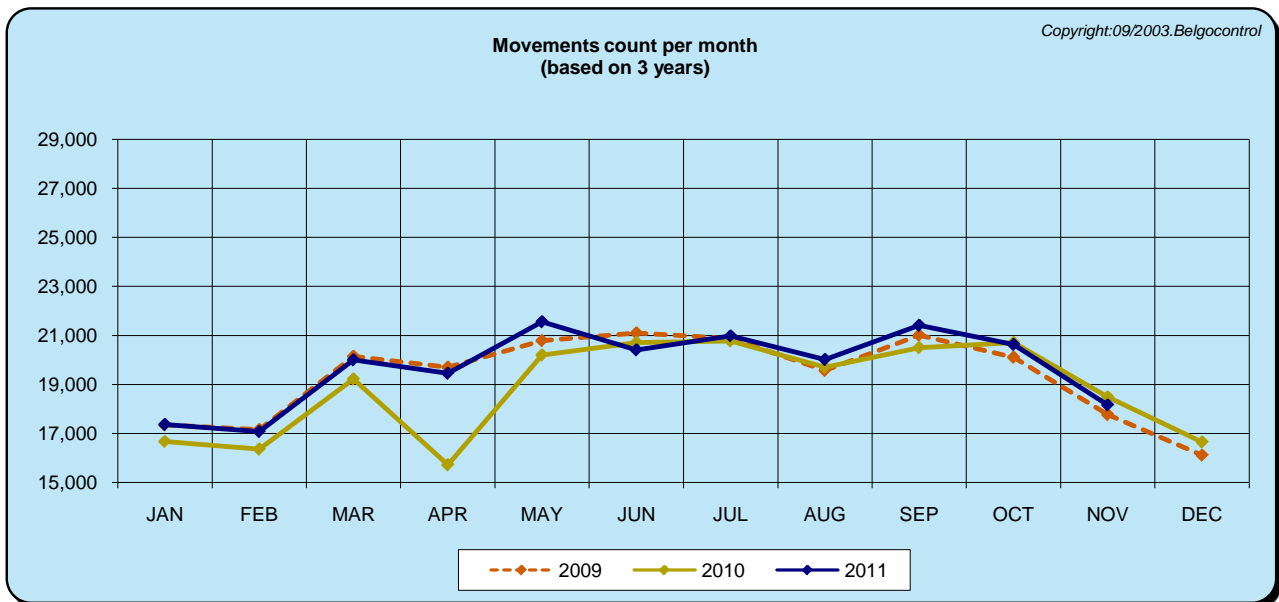




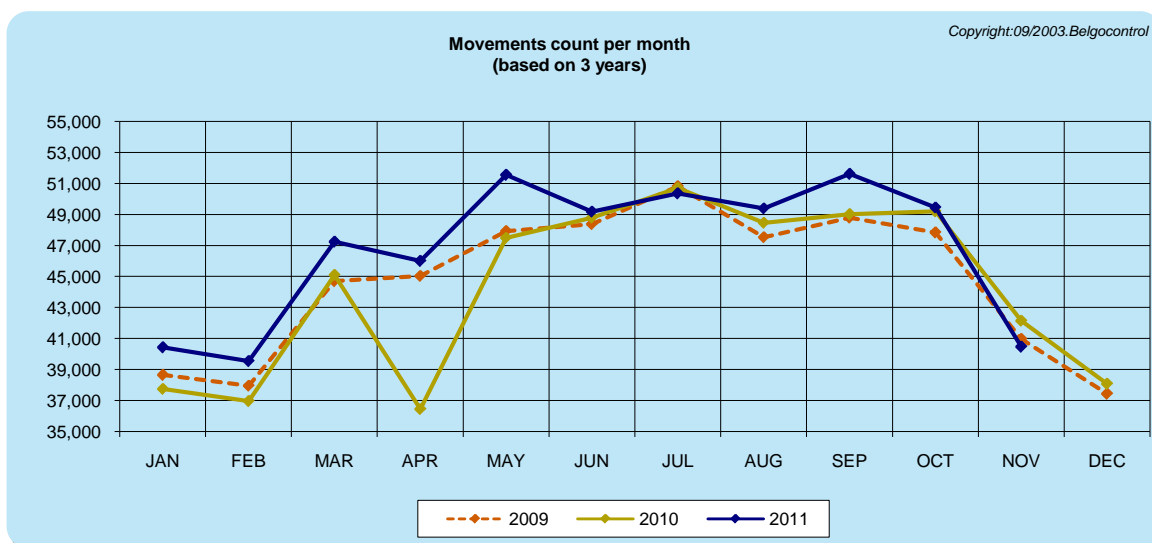
OVERVIEW MOVEMENTS AT BRUSSELS AIRPORT

	2009	2010	2011	%
JAN	17,353	16,678	17,358	4.08
FEB	17,153	16,361	17,077	4.38
MAR	20,141	19,216	19,999	4.07
APR	19,699	15,718	19,448	23.73
MAY	20,780	20,195	21,560	6.76
JUN	21,101	20,704	20,404	-1.45
JUL	20,871	20,772	20,986	1.03
AUG	19,574	19,699	20,009	1.57
SEP	21,002	20,494	21,414	4.49
OCT	20,105	20,705	20,625	-0.39
NOV	17,772	18,490	18,167	-1.75
DEC	16,117	16,650		
TOT	231,668	225,682	217,047	



OVERVIEW MOVEMENTS AT CANAC-ALL TRAFFIC

	2009	2010	2011	%
JAN	38,651	37,759	40,424	7.06
FEB	37,966	36,965	39,540	6.97
MAR	44,703	45,095	47,236	4.75
APR	45,041	36,453	45,996	26.18
MAY	47,924	47,502	51,549	8.52
JUN	48,383	48,799	49,188	0.80
JUL	50,809	50,715	50,355	-0.71
AUG	47,539	48,469	49,395	1.91
SEP	48,794	49,020	51,612	5.29
OCT	47,835	49,201	49,454	0.51
NOV	40,968	42,155	40,475	-3.99
DEC	37,439	38,078		
TOT	536,052	530,211	515,224	



EBAW movements

2008	IFR	VFR	total
jan	1667	2803	4470
feb	1960	3589	5733
mar	1707	2571	4278
apr	2584	4658	7242
may	2397	5675	8072
jun	2670	4353	7023
jul	2220	4402	6622
aug	1781	4788	6569
sep	2295	4951	7246
oct	2072	4248	6320
nov	1965	2713	4678
dec	2213	3372	5585
TOTAL 2008	25531	48123	73838

2009		Δ YR-1(%)		Δ YR-1(%)		Δ YR-1(%)
jan	1889	↑ 13.32	2925	↑ 4	4814	↑ 7.70
feb	1930	↓ -1.53	2869	↓ -20	4799	↓ -16.29
mar	2156	↑ 26.30	4516	↑ 76	6672	↑ 55.96
apr	2103	↓ -18.61	5365	↑ 15	7468	↑ 3.12
may	1837	↓ -23.36	6711	↑ 18	8548	↑ 5.90
jun	2069	↓ -22.51	6288	↑ 44	8357	↑ 18.99
jul	2143	↓ -3.47	6061	↑ 38	8204	↑ 23.89
aug	1751	↓ -1.68	6053	↑ 26	7804	↑ 18.80
sep	1916	↓ -16.51	5134	↑ 4	7050	↓ -2.70
oct	2084	↑ 0.58	4733	↑ 11	6817	↑ 7.86
nov	1711	↓ -12.93	2210	↓ -19	3921	↓ -16.18
dec	1696	↓ -23.36	2787	↓ -17	4483	↓ -19.73
TOTAL 2009	23285	↓ -8.80	55652	↑ 16	78937	↑ 6.91

2010		Δ YR-1(%)		Δ YR-1(%)		Δ YR-1(%)
jan	1741	↓ -7.83	1956	↓ -33	3697	↓ -23.20
feb	1785	↓ -7.51	2198	↓ -23	3983	↓ -17.00
mar	2493	↑ 15.63	4173	↓ -8	6666	↓ -0.09
apr	1668	↓ -20.68	4495	↓ -16	6163	↓ -17.47
may	1964	↑ 6.91	5202	↓ -22	7166	↓ -16.17
jun	2189	↑ 5.80	5208	↓ -17	7397	↓ -11.49
jul	1919	↓ -10.45	6035	↓ -0.4	7954	↓ -3.05
aug	1935	↑ 10.51	4666	↓ -23	6601	↓ -15.42
sep	2174	↑ 13.47	4075	↓ -21	6249	↓ -11.36
oct	2212	↑ 6.14	3799	↓ -20	6011	↓ -11.82
nov	1756	↑ 2.63	1748	↓ -21	3504	↓ -10.64
dec	1423	↓ -16.10	1537	↓ -45	2960	↓ -33.97
TOTAL 2010	23259	↓ -0.11	45092	↓ -19	68351	↓ -13.41

2011		Δ YR-1(%)		Δ YR-1(%)		Δ YR-1(%)
jan	2182	↑ 25.33	2976	↑ 52.15	5158	↑ 39.52
feb	2034	↑ 13.95	2100	↓ -4.46	4134	↑ 3.79
mar	2662	↑ 6.78	4063	↓ -2.64	6725	↑ 0.89
apr	2596	↑ 55.64	4163	↓ -7.39	6759	↑ 9.67
may	2618	↑ 33.30	4489	↓ -13.71	7107	↓ -0.82
jun	2763	↑ 26.22	3806	↓ -26.92	6569	↓ -11.19
jul	2203	↑ 14.80	4025	↓ -33.31	6228	↓ -21.70
aug	2061	↑ 6.51	4181	↓ -10.39	6242	↓ -5.44
sep	2454	↑ 12.88	4205	↑ 3.19	6659	↑ 6.56
oct	1953	↓ -11.71	3440	↓ -9.45	5393	↓ -10.28
nov	1934	↑ 10.14	2369	↑ 35.53	4303	↑ 22.80
dec						
2011 (YTD)	25460	↑ 16.60	39817	↓ -8.58	65277	↓ -0.17

EBCI movements

2008	IFR	VFR	total
jan	2575	3753	6328
feb	2706	5399	8105
mar	2632	4183	6815
apr	3471	6619	10090
may	3753	6091	9844
jun	3489	5712	9201
jul	3387	4718	8105
aug	3667	4961	8628
sep	3391	4866	8257
oct	3385	5723	9108
nov	2911	3610	6521
dec	2668	3392	6060
TOTAL 2008	38035	59027	97062

2009		Δ YR-1(%)		Δ YR-1(%)		Δ YR-1(%)
jan	2813	↑ 9.24	3592	↓ -4	6405	↑ 1.22
feb	2797	↑ 3.36	2972	↓ -45	5769	↓ -28.82
mar	3654	↑ 38.83	5247	↑ 25	8901	↑ 30.61
apr	4019	↑ 15.79	5545	↓ -16	9564	↓ -5.21
may	4232	↑ 12.76	5076	↓ -17	9308	↓ -5.44
jun	4244	↑ 21.64	5375	↓ -6	9619	↑ 4.54
jul	3997	↑ 18.01	5511	↑ 17	9508	↑ 17.31
aug	4433	↑ 20.89	5885	↑ 19	10318	↑ 19.59
sep	4048	↑ 19.37	4931	↑ 1	8979	↑ 8.74
oct	4121	↑ 21.74	5173	↓ -10	9294	↑ 2.04
nov	3523	↑ 21.02	2700	↓ -25	6223	↓ -4.57
dec	3550	↑ 33.06	3077	↓ -9	6627	↑ 9.36
TOTAL 2009	45431	↑ 19.45	55084	↓ -7	100515	↑ 3.56

2010		Δ YR-1(%)		Δ YR-1(%)		Δ YR-1(%)
jan	3478	↑ 23.64	2322	↓ -35	5800	↓ -9.45
feb	3218	↑ 15.05	3141	↑ 6	6359	↑ 10.23
mar	4150	↑ 13.57	6436	↑ 23	10586	↑ 18.93
apr	3622	↓ -9.88	5310	↓ -4	8932	↓ -6.61
may	4772	↑ 12.76	4137	↓ -18	8909	↓ -4.29
jun	4965	↑ 16.99	4428	↓ -18	9393	↓ -2.35
jul	5042	↑ 26.14	4392	↓ -20.3	9434	↓ -0.78
aug	4890	↑ 10.31	3466	↓ -41	8356	↓ -19.02
sep	4668	↑ 15.32	3726	↓ -24	8394	↓ -6.52
oct	4747	↑ 15.19	4302	↓ -17	9049	↓ -2.64
nov	4233	↑ 20.15	1790	↓ -34	6023	↓ -3.21
dec	3402	↓ -4.17	957	↓ -69	4359	↓ -34.22
TOTAL 2010	51187	↑ 12.67	44407	↓ -19	95594	↓ -4.90

2011		Δ YR-1(%)		Δ YR-1(%)		Δ YR-1(%)
jan	4271	↑ 22.80	2273	↓ -2.11	6544	↑ 12.83
feb	3787	↑ 17.68	3241	↑ 3.18	7028	↑ 10.52
mar	4809	↑ 15.88	5650	↓ -12.21	10459	↓ -1.20
apr	4717	↑ 30.23	5340	↑ 0.56	10057	↑ 12.60
may	5096	↑ 6.79	5418	↑ 30.96	10514	↑ 18.02
jun	5293	↑ 6.61	4364	↓ -1.45	9657	↑ 2.81
jul	4962	↓ -1.59	3536	↓ -19.49	8498	↓ -9.92
aug	5058	↑ 3.44	3962	↑ 14.31	9020	↑ 7.95
sep	4781	↑ 2.42	4006	↑ 7.51	8787	↑ 4.68
oct	4622	↓ -2.63	3798	↓ -11.72	8420	↓ -6.95
nov	3950	↓ -6.69	3743	↑ 109.11	7693	↑ 27.73
dec						
2011 (YTD)	51346	↑ 7.45	45331	↑ 4.33	96677	↑ 5.96

EBLG movements

2008	IFR	VFR	total
jan	2364	905	3269
feb	2368	1842	4210
mar	2440	1172	3612
apr	2756	2007	4763
may	2978	2508	5486
jun	2692	1809	4501
jul	3032	1596	4628
aug	2815	2205	5020
sep	2710	1775	4485
oct	2637	1313	3950
nov	2471	892	3363
dec	2247	1181	3428
TOTAL 2008	31510	19205	50715

2009		$\Delta YR-1(\%)$		$\Delta YR-1(\%)$		$\Delta YR-1(\%)$
jan	2080	↓ -12.01	887	↓ -2	2967	↓ -9.24
feb	2149	↓ -9.25	859	↓ -53	3008	↓ -28.55
mar	2465	↑ 1.02	1929	↑ 65	4394	↑ 21.65
apr	2411	↓ -12.52	1720	↓ -14	4131	↓ -13.27
may	2549	↓ -14.41	1953	↓ -22	4502	↓ -17.94
jun	2389	↓ -11.26	1238	↓ -32	3627	↓ -19.42
jul	2586	↓ -14.71	1254	↓ -21	3840	↓ -17.03
aug	2461	↓ -12.58	1482	↓ -33	3943	↓ -21.45
sep	2539	↓ -6.31	1661	↓ -6	4200	↓ -6.35
oct	2630	↓ -0.27	1706	↑ 30	4336	↑ 9.77
nov	2358	↓ -4.57	1183	↑ 33	3541	↑ 5.29
dec	2438	↑ 8.50	863	↓ -27	3301	↓ -3.70
TOTAL 2009	29055	↓ -7.79	16735	↓ -13	45790	↓ -9.71

2010		$\Delta YR-1(\%)$		$\Delta YR-1(\%)$		$\Delta YR-1(\%)$
jan	2255	↑ 8.41	640	↓ -28	2895	↓ -2.43
feb	2253	↑ 4.84	727	↓ -15	2980	↓ -0.93
mar	2624	↑ 6.45	987	↓ -49	3611	↓ -17.82
apr	2135	↓ -11.45	1637	↓ -5	3772	↓ -8.69
may	2627	↑ 3.06	2620	↑ 34	5247	↑ 16.55
jun	2701	↑ 13.06	1287	↑ 4	3988	↑ 9.95
jul	2873	↑ 11.10	2345	↑ 87.0	5218	↑ 35.89
aug	2661	↑ 8.13	2010	↑ 36	4671	↑ 18.46
sep	2868	↑ 12.96	1824	↑ 10	4692	↑ 11.71
oct	2962	↑ 12.62	2014	↑ 18	4976	↑ 14.76
nov	2718	↑ 15.27	1281	↑ 8	3999	↑ 12.93
dec	2313	↓ -5.13	457	↓ -47	2770	↓ -16.09
TOTAL 2010	30990	↑ 6.66	17829	↑ 7	48819	↑ 6.61

2011		$\Delta YR-1(\%)$		$\Delta YR-1(\%)$		$\Delta YR-1(\%)$
jan	2549	↑ 13.04	1264	↑ 97.50	3813	↑ 31.71
feb	2729	↑ 21.13	1400	↑ 92.57	4129	↑ 38.56
mar	3921	↑ 49.43	4518	↑ 357.75	8439	↑ 133.70
apr	3477	↑ 62.86	4160	↑ 154.12	7637	↑ 102.47
may	3794	↑ 44.42	4389	↑ 67.52	8183	↑ 55.96
jun	3620	↑ 34.02	3567	↑ 177.16	7187	↑ 80.22
jul	3791	↑ 31.95	3298	↑ 40.64	7089	↑ 35.86
aug	3545	↑ 33.22	4235	↑ 110.70	7780	↑ 66.56
sep	3637	↑ 26.81	4010	↑ 119.85	7647	↑ 62.98
oct	3759	↑ 26.91	3495	↑ 73.54	7254	↑ 45.78
nov	3697	↑ 36.02	3305	↑ 158.00	7002	↑ 75.09
dec						
2011 (YTD)	38519	↑ 34.32	37641	↑ 116.68	76160	↑ 65.39

EBOS movements

2008	IFR	VFR	total
jan	1396	3007	4403
feb	1210	4728	5938
mar	1389	4237	5626
apr	1636	5358	6994
may	1422	6803	8225
jun	1737	5181	6918
jul	1593	7005	8598
aug	1715	7068	8783
sep	1749	6959	8708
oct	1507	5607	7114
nov	1392	2894	4286
dec	1352	3834	5186
TOTAL 2008	18098	62681	80779

2009		$\Delta YR-1(\%)$		$\Delta YR-1(\%)$		$\Delta YR-1(\%)$
jan	1282	↓ -8.17	3307	↑ 10	4589	↑ 4.22
feb	1275	↑ 5.37	4378	↓ -7	5653	↓ -4.80
mar	1884	↑ 35.64	5731	↑ 35	7615	↑ 35.35
apr	1528	↓ -6.60	4535	↓ -15	6063	↓ -13.31
may	2388	↑ 67.93	6881	↑ 1	9269	↑ 12.69
jun	2440	↑ 40.47	6309	↑ 22	8749	↑ 26.47
jul	2714	↑ 70.37	6332	↓ -10	9046	↑ 5.21
aug	2426	↑ 41.46	7734	↑ 9	10160	↑ 15.68
sep	2238	↑ 27.96	6534	↓ -6	8772	↑ 0.73
oct	2586	↑ 71.60	5480	↓ -2	8066	↑ 13.38
nov	1868	↑ 34.20	3126	↑ 8	4994	↑ 16.52
dec	1816	↑ 34.32	2973	↓ -22	4789	↓ -7.66
TOTAL 2009	24445	↑ 35.07	63320	↑ 1	87765	↑ 8.65

2010		$\Delta YR-1(\%)$		$\Delta YR-1(\%)$		$\Delta YR-1(\%)$
jan	1590	↑ 24.02	2463	↓ -26	4053	↓ -11.68
feb	1593	↑ 24.94	2842	↓ -35	4435	↓ -21.55
mar	2672	↑ 41.83	6742	↑ 18	9414	↑ 23.62
apr	2055	↑ 34.49	5948	↑ 31	8003	↑ 32.00
may	2530	↑ 5.95	6015	↓ -13	8545	↓ -7.81
jun	3053	↑ 25.12	6327	↑ 0	9380	↑ 7.21
jul	3738	↑ 37.73	7077	↑ 11.8	10815	↑ 19.56
aug	3357	↑ 38.38	6054	↓ -22	9411	↓ -7.37
sep	2650	↑ 18.41	5459	↓ -16	8109	↓ -7.56
oct	2449	↓ -5.30	5656	↑ 3	8105	↑ 0.48
nov	1282	↓ -31.37	2295	↓ -27	3577	↓ -28.37
dec	1183	↓ -34.86	2152	↓ -28	3335	↓ -30.36
TOTAL 2010	28152	↑ 15.16	59030	↓ -7	87182	↓ -0.66

2011		$\Delta YR-1(\%)$		$\Delta YR-1(\%)$		$\Delta YR-1(\%)$
jan	1338	↓ -15.85	3154	↑ 28.06	4492	↑ 10.83
feb	1262	↓ -20.78	3770	↑ 32.65	5032	↑ 13.46
mar	2103	↓ -21.29	4799	↓ -28.82	6902	↓ -26.68
apr	2276	↑ 10.75	4602	↓ -22.63	6878	↓ -14.06
may	3048	↑ 20.47	4565	↓ -24.11	7613	↓ -10.91
jun	2741	↓ -10.22	4515	↓ -28.64	7256	↓ -22.64
jul	2568	↓ -31.30	4110	↓ -41.92	6678	↓ -38.25
aug	2466	↓ -26.54	3844	↓ -36.50	6310	↓ -32.95
sep	2728	↑ 2.94	3123	↓ -42.79	5851	↓ -27.85
oct	2617	↑ 6.86	3419	↓ -39.55	6036	↓ -25.53
nov	1604	↑ 25.12	1814	↓ -20.96	3418	↓ -4.45
dec						
2011 (YTD)	24751	↓ -8.22	41715	↓ -26.66	66466	↓ -20.73